

APPENDIX B

MUSCO LIGHTING PROPOSAL
PREPARED FOR

Worthington Park Mini-Pitch

Madison, WI
September 22, 2025

Project # 241989

SUBMITTED BY

Musco Sports Lighting, LLC

211 2nd Avenue West
P.O. Box 808
Oskaloosa, IA 52577
Phone: 800.825.6030
Phone: 641.673.0411
Email: lighting@musco.com



A. BILL OF MATERIALS

B. PRODUCT INFORMATION

Lighting Design

Concept Drawing

Mini-Pitch System™ Modular Sports Solution Datasheet

TLC-LED-550 Luminaire and Driver Datasheet

Site Requirements

C. WARRANTY

Sample Musco 10-Year Warranty



ITEM A



Worthington Park Mini-Pitch

Madison, WI

September 22, 2025

Bill of Materials

Musco's Mini-Pitch System™ Modular Sports Solution as described below, and delivered to the job site:

(1)– 50' x 104' Mini-Pitch System™

System Description – Mini-Pitch System™ Modular Sports Solution with TLC for LED® technology

- Galvanized steel pole fence panels, and structure
- Built-in goals
- Factory aimed and assembled TLC for LED® luminaires
- Remote electrical component enclosures
- Pole length wire harnesses
- Seating accommodations and cupholders
- Lockable storage

On Field Performance – control to benefit players and spectators

- Light is directed onto the surface, allowing for enhanced visibility
- Control-Link® control system for remote on/off control

Environmental Light Control – control for neighbors and the environment

- Reduction of spill light and glare by 50% or more

Always Ready to Play – control assuring the results you expect

- Product assurance and warranty program that includes materials and onsite labor, eliminating 100% of your maintenance costs for 10 years

Thank you for considering our Team for your modular sports solution needs. Please contact us with any questions.

Karen Ventura, Soccer Market Representative

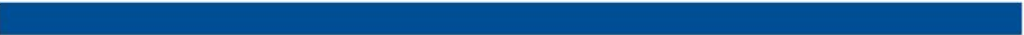
Phone: 641-670-0010

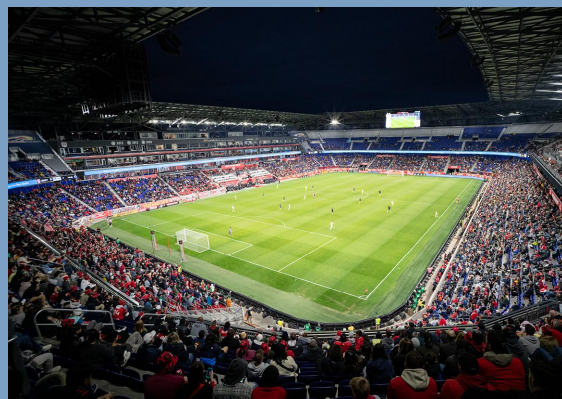
E-mail: karen.ventura@musco.com





ITEM B





Sports Illustrated Stadium, Harrison, New Jersey, USA



UBS Arena, Elmont, New York, USA



Iowa Women of Achievement Bridge, Des Moines, Iowa, USA



Tottenham Hotspur FC Training Ground, Tottenham, London, UK

Worthington Park Mini-Pitch

Madison, WI



Sales Representative: Karen Ventura Villalobos · Designed By: Brayton Carter · Design No.: 241989A · September 22, 2025

Worthington Park Mini-Pitch

Madison, WI

LIGHTING SYSTEM

Structure/Fixture Summary						
Structure ID	Structure Height	Fixt. Attachment Ht.	Fixture Qty	Fixture Type	Load	Circuit
P1	24'	24'	2	TLC-LED-550	1.08 kW	A
1			2		1.08 kW	

Circuit Summary			
Circuit	Description	Load	Fixture Qty
A	Mini-Pitch	1.08 kW	2

Fixture Type Summary								
Type	Circuit	Source	Wattage	Lumens	L90	L80	L70	Quantity
TLC-LED-550	A	LED 5700K - 75 CRI	540W	67,000	>120,000	>120,000	>120,000	2

Single Fixture Amperage Draw Chart									
Driver Specifications (.90 min power factor)			Line Amperage Per Fixture (max draw)						
Single Phase Voltage			208 (60)	220 (60)	240 (60)	277 (60)	347 (60)	380 (60)	480 (60)
TLC-LED-550			3.2	3.0	2.8	2.4	1.9	1.8	1.4

Light Level Summary

Calculation Grid Summary								
Grid Name	Calculation Metric	Illumination Ave					Circuits	Fixture Qty
		Ave	Min	Max	Max/Min	Ave/Min		
Mini-Pitch	Horizontal Illuminance	20.64	4	46	11.72	5.29	A	2
Roadway Spill	Horizontal	0.00	0	0	-	-	A	2

Guaranteed Performance: The ILLUMINATION described above is guaranteed per your Musco Warranty document.

Field Measurements: Individual field measurements may vary from computer-calculated predictions.

Electrical System Requirements: Refer to Amperage Draw Chart and/or the "Musco Control System Summary" for electrical sizing.

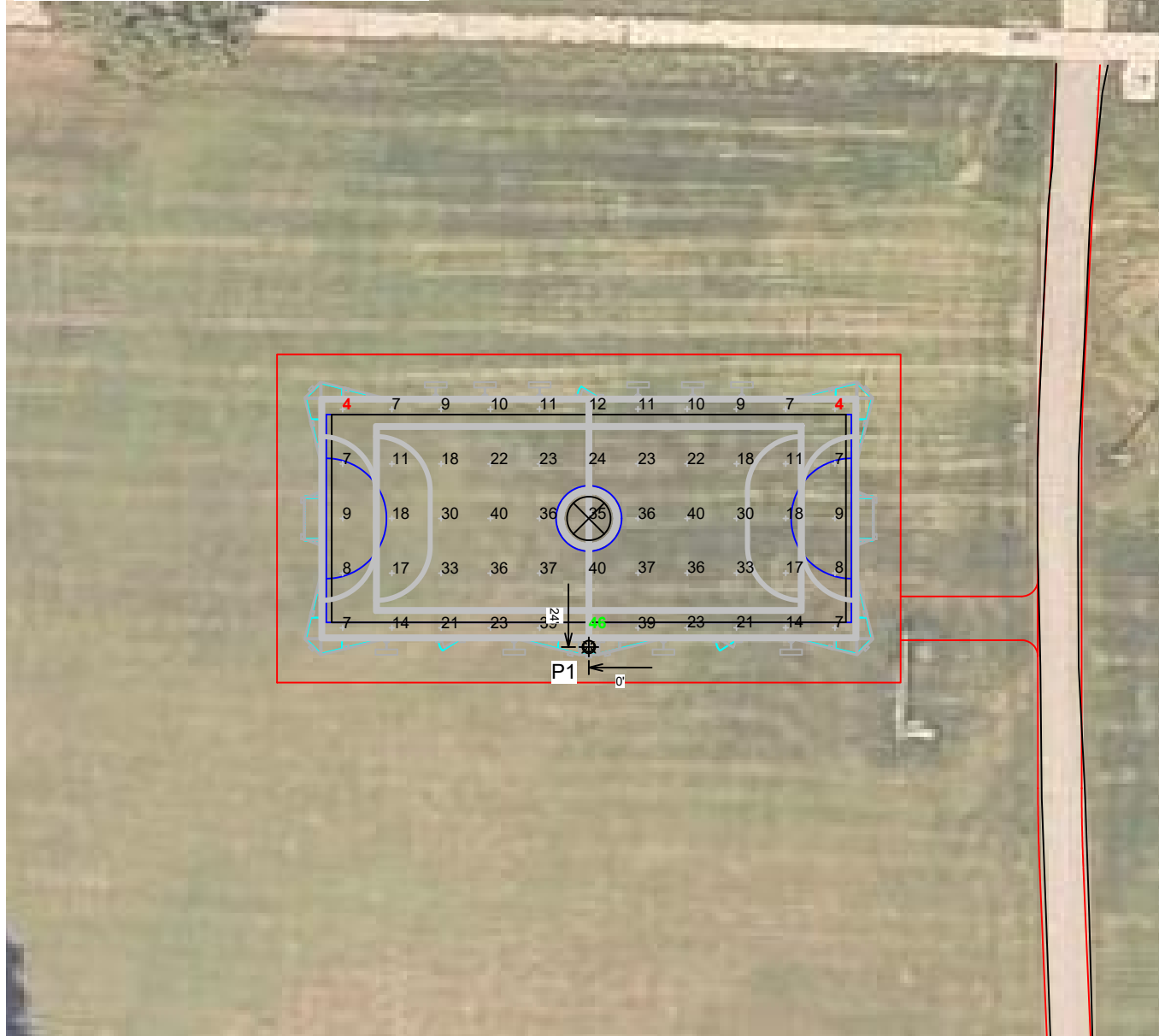
Installation Requirements: Results assume ± 3% nominal voltage at line side of the driver and structures located within 3 feet (1m) of design locations.



Equipment List For Areas Shown

Structure				Fixtures				
QTY	STRUCTURE ID	SIZE	GRADE ELEVATION	ABOVE FIELD LEVEL	FIXTURE TYPE	QTY/POLE	THIS GRID	OTHER GRIDS
1	P1	24'	-	24'	TLC-LED-550	2	2	0
1	Totals					2	2	0

Above Field Level is height of fixtures above area shown



Worthington Park Mini-Pitch

Madison, WI

Grid Summary

Name: Mini-Pitch
Size: 98' x 44'
Spacing: 9.0' x 10.0'
Height: 3.0' above grade

Illumination Summary

	MAINTAINED HORIZONTAL FOOTCANDELS
	Entire Grid
Scan Average:	20.64
Maximum:	46
Minimum:	4
Avg/Min:	5.29
Max/Min:	11.72
UG (adjacent pts):	2.32
CU:	0.81
No. of Points:	55
FIXTURE INFORMATION	
Applied Circuits:	A
No. of Fixtures:	2
Total Load:	1.08 kW

Guaranteed Performance: The ILLUMINATION described above is guaranteed per your Musco Warranty document.

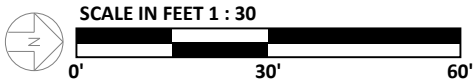
Field Measurements: Individual field measurements may vary from computer-calculated predictions.

Electrical System Requirements: Refer to Amperage Draw Chart and/or the "Musco Control System Summary" for electrical sizing.

Installation Requirements: Results assume $\pm 3\%$ nominal voltage at line side of the driver and structures located within 3 feet (1m) of design locations.



Pole location(s) ⊕ dimensions are relative to 0,0 reference point(s) ⊗



ENGINEERED DESIGN By: Brayton Carter • File #241989A • 22-Sep-25

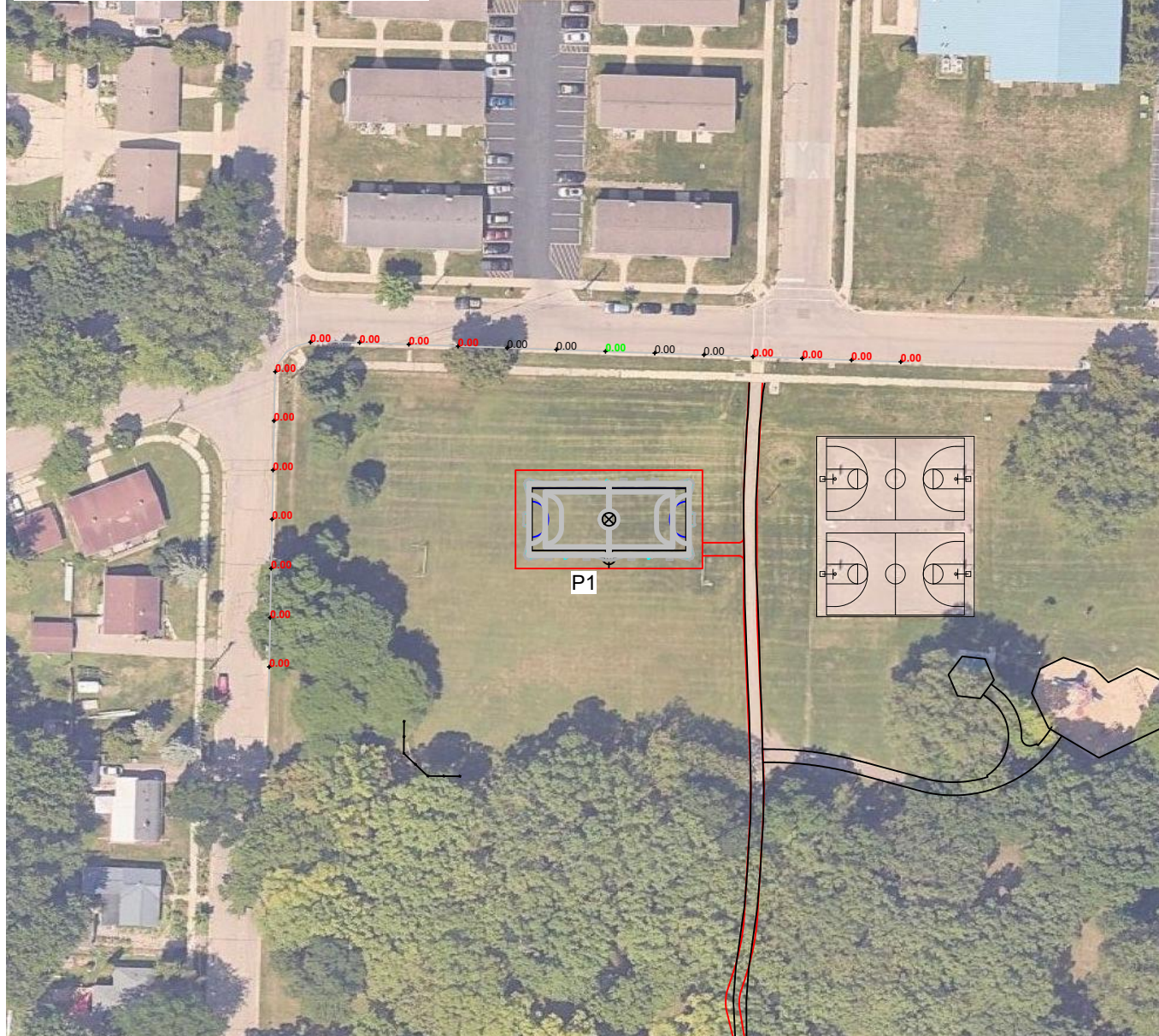
Not to be reproduced in whole or part without the written consent of Musco Sports Lighting, LLC. ©1981, 2025 Musco Sports Lighting, LLC.

ILLUMINATION SUMMARY

Equipment List For Areas Shown

Structure			Fixtures					
QTY	STRUCTURE ID	SIZE	GRADE ELEVATION	ABOVE FIELD LEVEL	FIXTURE TYPE	QTY/POLE	THIS GRID	OTHER GRIDS
1	P1	24'	-	24'	TLC-LED-550	2	2	0
1	Totals					2	2	0

Above Field Level is height of fixtures above area shown



Worthington Park Mini-Pitch

Madison, WI

Grid Summary

Name: Roadway Spill
 Spacing: 30.0' x 10.0'
 Height: 3.0' above grade

Illumination Summary

MAINTAINED HORIZONTAL FOOTCANDLES	
Entire Grid	
Scan Average:	0.00
Maximum:	0
Minimum:	0
Avg/Min:	-
Max/Min:	-
UG (adjacent pts):	0.00
CU:	0.00
No. of Points:	20
FIXTURE INFORMATION	
Applied Circuits:	A
No. of Fixtures:	2
Total Load:	1.08 kW

Guaranteed Performance: The ILLUMINATION described above is guaranteed per your Musco Warranty document.

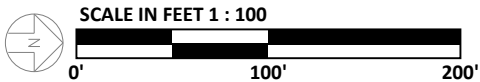
Field Measurements: Individual field measurements may vary from computer-calculated predictions.

Electrical System Requirements: Refer to Amperage Draw Chart and/or the "Musco Control System Summary" for electrical sizing.

Installation Requirements: Results assume $\pm 3\%$ nominal voltage at line side of the driver and structures located within 3 feet (1m) of design locations.



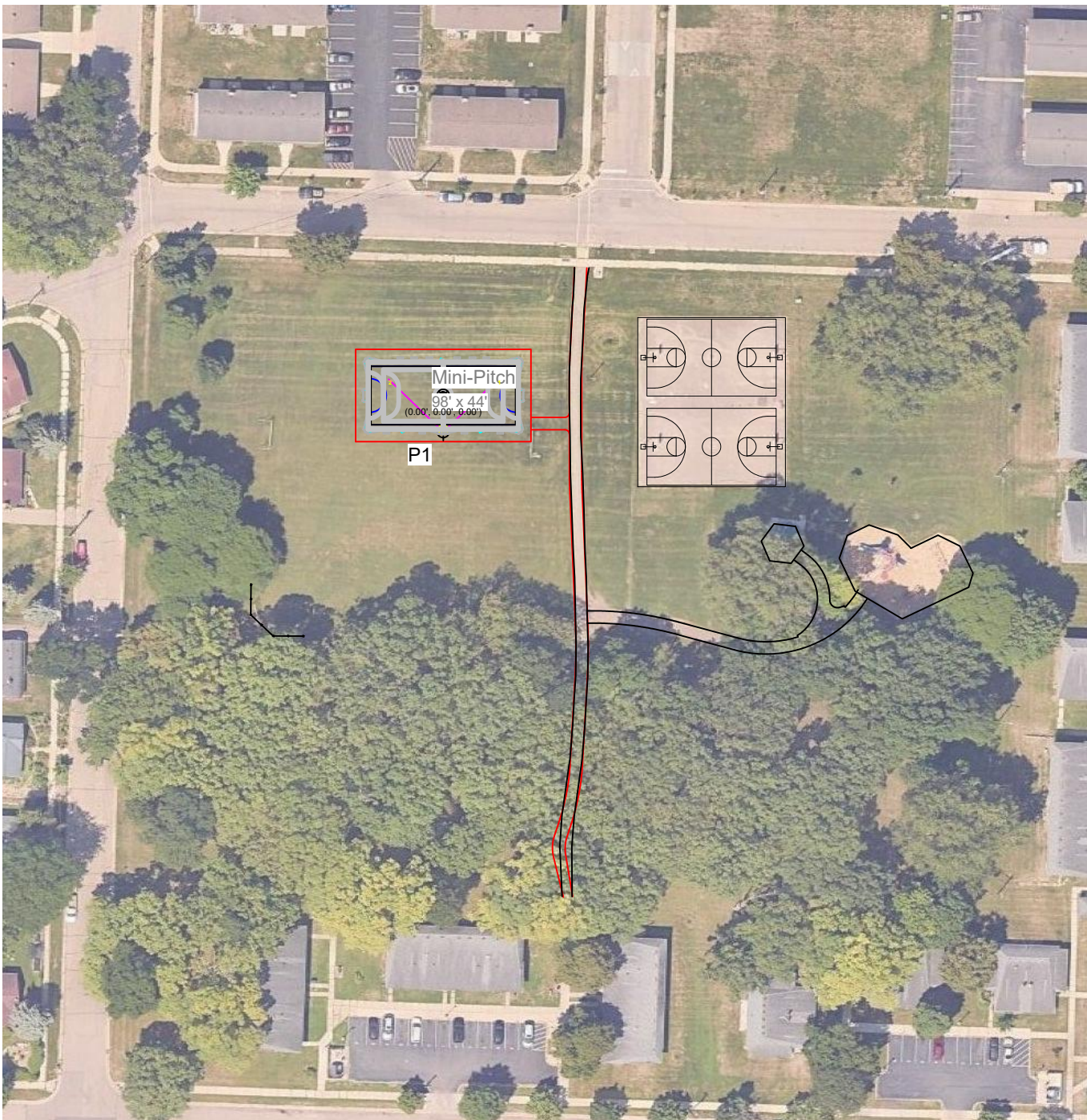
Pole location(s) ⊕ dimensions are relative to 0,0 reference point(s) ⊗



ENGINEERED DESIGN By: Brayton Carter • File #241989A • 22-Sep-25

Not to be reproduced in whole or part without the written consent of Musco Sports Lighting, LLC. ©1981, 2025 Musco Sports Lighting, LLC.

ILLUMINATION SUMMARY



Worthington Park Mini-Pitch

Madison, WI

Equipment Layout

INCLUDES:
- Mini-Pitch

Electrical System Requirements: Refer to Amperage Draw Chart and/or the "Musco Control System Summary" for electrical sizing.

Installation Requirements: Results assume ± 3% nominal voltage at line side of the driver and structures located within 3 feet (1m) of design locations.

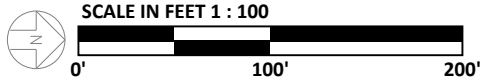
Equipment List For Areas Shown

QTY	Structure			Fixtures		
	STRUCTURE ID	SIZE	GLOBAL ELEVATION	ABOVE GLOBAL LEVEL	FIXTURE TYPE	QTY/POLE
1	P1	24'	-	24'	TLC-LED-550	2
1	Totals					2

Above Global Level is height of fixtures above design (0,0,0)

Single Fixture Amperage Draw Chart

Driver Specifications (.90 min power factor)	Line Amperage Per Fixture (max draw)						
Single Phase Voltage	208 (60)	220 (60)	240 (60)	277 (60)	347 (60)	380 (60)	480 (60)
TLC-LED-550	3.2	3.0	2.8	2.4	1.9	1.8	1.4

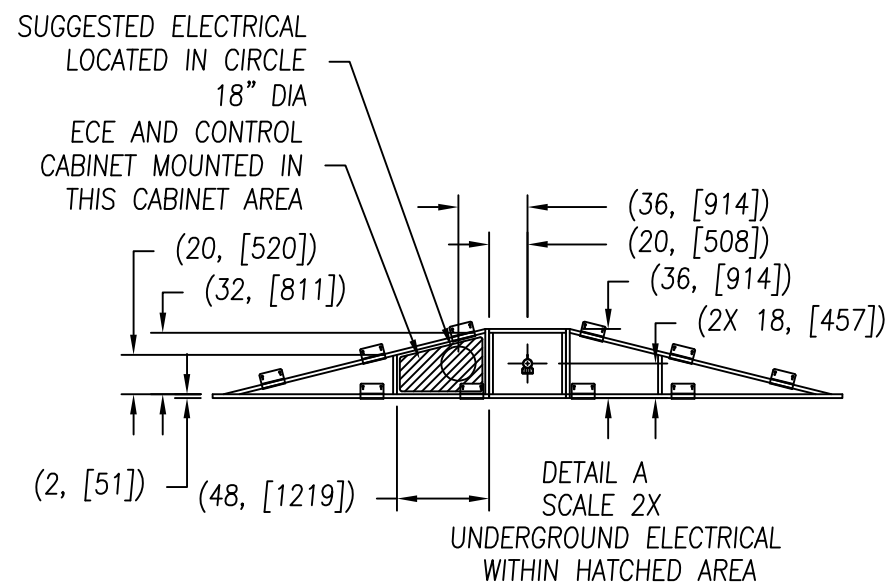
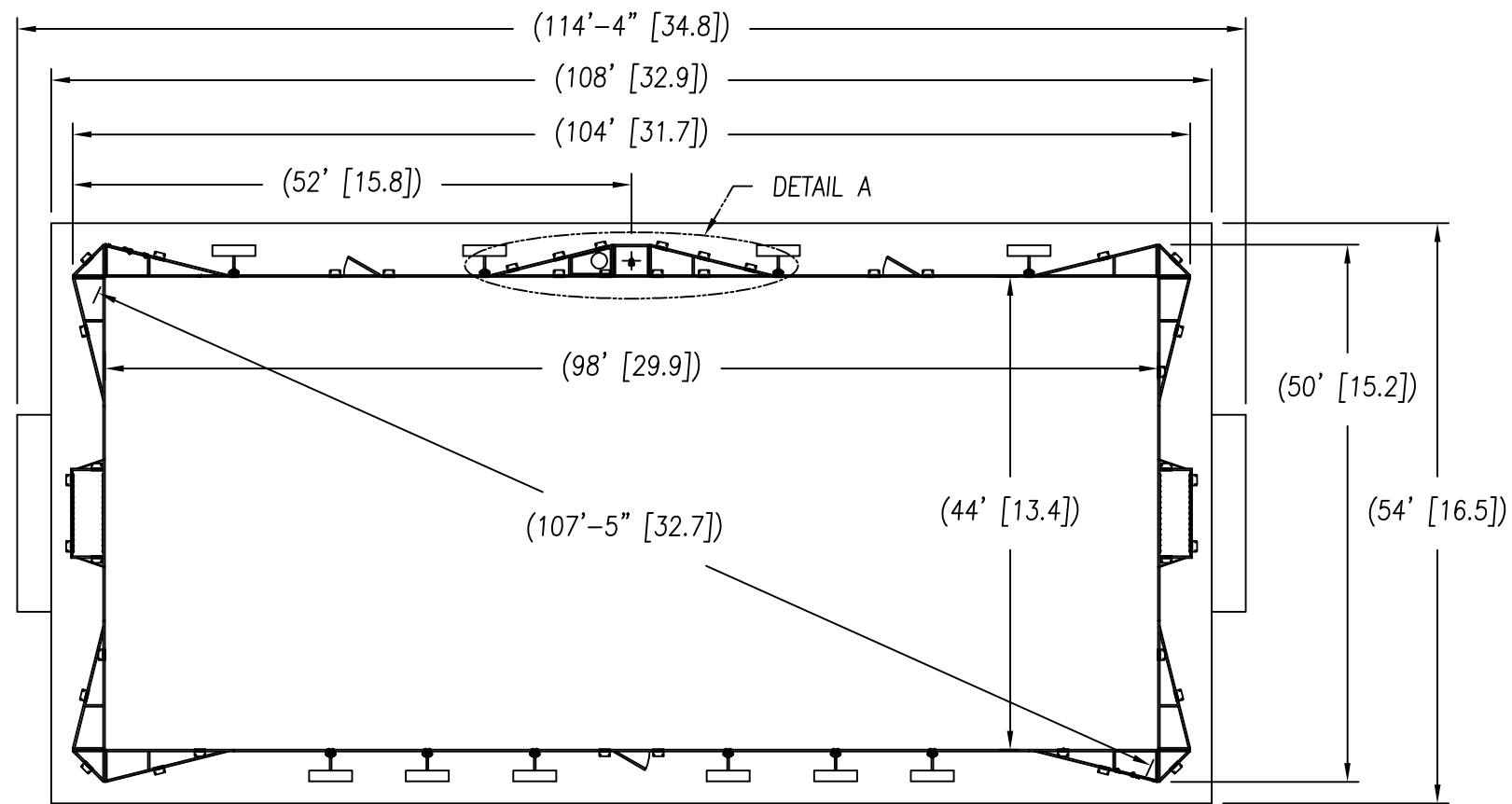


ENGINEERED DESIGN By: Brayton Carter • File #241989A • 22-Sep-25

Pole location(s) ⊕ dimensions are relative to 0,0 reference point(s) ⊗



Not to be reproduced in whole or part without the written consent of Musco Sports Lighting, LLC.
©1981, 2025 Musco Sports Lighting, LLC.



MINIMUM PAD **Asphalt Pad will be 60' x 114'**

ELECTRICAL NOTES

PROJECT VOLTAGE: **208**

CONTROL VOLTAGE: **120**

SURFACE TYPE: **ASPHALT**

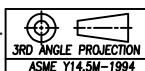
MINIMUM PAD SURFACE: 108' X 54'
32.9M X 16.5M

- NOTES:
- SPECIFICATIONS FOR ALL HARDWARE CONNECTING FRAMES.
SIZE: 1/2-13
MATERIAL: GRADE 1 STEEL OR BETTER.
FINISH: HOT DIP GALVANIZED C CLASS
 - GROUND ANCHOR SPECIFICATIONS. 124 ANCHORS ARE USED FOR THIS FIELD SIZE.
ASPHALT SURFACE:
TYPICAL PULL RESISTANCE: 2,500 LBS
TYPICAL SHEAR RESISTANCE: 2,500 LBS
2000 PSI CONCRETE SURFACE:
TYPICAL PULL RESISTANCE: 2,999 LBS
TYPICAL SHEAR RESISTANCE: 5,564 LBS
 - WIND LOADING LIMITS:
NO BANNERS ON STRUCTURE
IBC 2015 175 MPH EXPOSURE C
BANNERS MOUNTED ON ALL SURFACES
IBC 2015 120 MPH EXPOSURE C

ENGINEERING REFERENCE DOCUMENT
DO NOT USE TO MANUFACTURE PRODUCT

ENG_REF_DOC_A

Information contained herein is the confidential property of Musco Sports Lighting, LLC and/or its parent companies, affiliates, successors and assigns. Reproduction, distribution, or use of the information other than its limited, intended purpose without express written permission is prohibited.



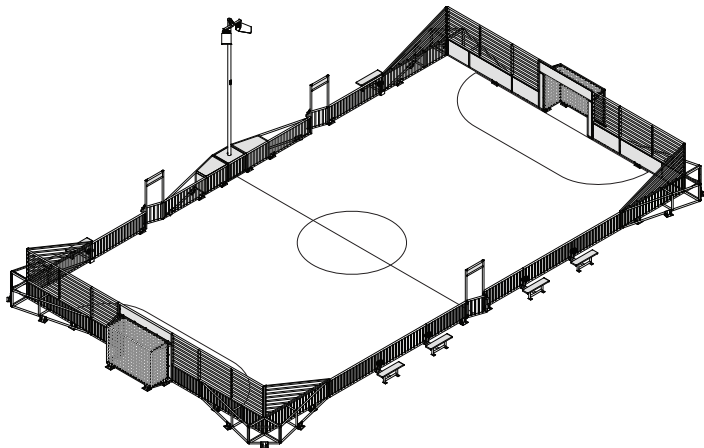
Worthington Park Mini-Pitch
Madison, WI
MINI PITCH, 104' X 50' (31.7 X 15.2)

CORPORATE OFFICE:
P.O. Box 808
100 1st Avenue West
Oskaloosa, Iowa 52577
+1-800-823-6020
+1-641-673-0411

REVISIONS:			
BY: R.L.			
DATE:			

JOB NUMBER:	
DRAWN BY:	
CHECK BY:	
REPRESENTATIVE:	
SCALE:	1/200
DATE:	22-Sept-25
DRAWING NUMBER:	241989X1
	1 OF 1 SHEETS

DWG REF: SBS-300



Overview

Mini-Pitch System™ modular sports solution includes everything needed to transform an underutilized area into a fully-equipped soccer pitch. The modular system includes lighting, fencing, goals, benches, ADA-compliant access, and lockable storage.

Features

Structure

- Designed and manufactured as a system
- All components prefabricated for bolt-together construction
- Pitch structure, crossarms, and pole shaft are hot-dip galvanized inside and outside after fabrication to meet ASTM-A123 and EN 1461 standards
- Engineered anchor system and hardware provided — all units are approved for 175 mi/h (78 m/s) winds without signage, 120 mi/h (54 m/s) with signage
- ADA compliant entry points with latching gates provided on each side of pitch
- Seating, cupholders, and 20 ft³ (0.566 m³) of lockable storage incorporated in structure

Lighting

- Designed and manufactured as a system including TLC for LED® luminaires, structural components, and complete electrical system including grounding and surge suppression
- All luminaires and electrical components enclosures factory assembled, aimed, wired, and tested
- Luminaires and mounting components withstand up to 150 mi/h (67 m/s) windspeed without misalignment

Control-Link® Service

- Instant on/off control or scheduled operation up to 10 years in advance
- Control-Link Central™ service center provides scheduling and support 24 hours a day, 7 days a week
- Customized usage reports through website

Warranty and Support

- 10-year warranty covers the complete system so your pitch is always ready for play

Technical Specifications

Goals

- Net material 0.19 in (4 mm) galvanized chain link
- Frame construction 0.12 in (3 mm) hot-dip galvanized steel tubing and channel
- Panel material 0.105 in (2.67 mm) powder-coated galvanized steel plate

Structure

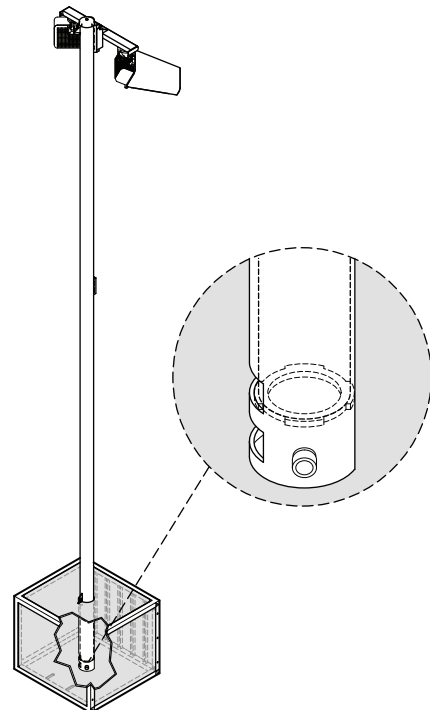
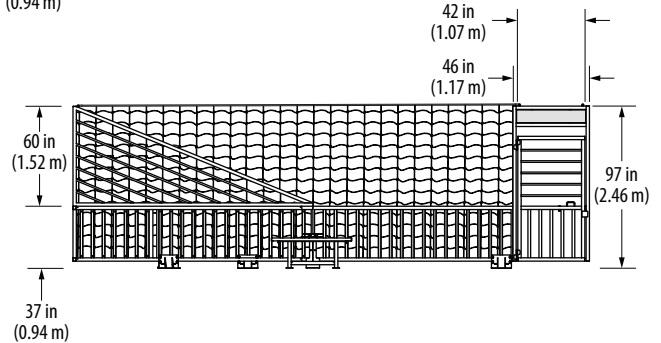
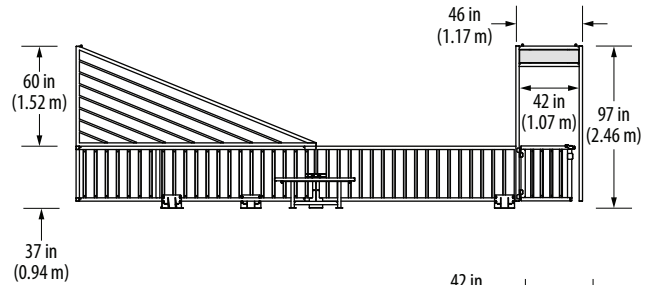
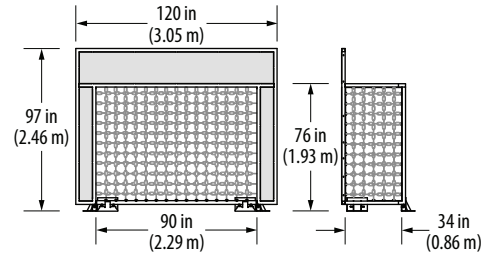
- Frame material 2 in (50 mm) square steel tube
- Picket material 0.12 in (3 mm) steel channel
- Cabinet material 0.105 in (2.67 mm) steel plate
- Finish Hot-dip galvanized
- Construction Prefabricated sections bolt-together assembly
- Bench dimensions 11.5 in (292 mm) x 4 ft (1.22 m)
Bench quantity varies see pitch configurations for details
- Bench material 0.078 in (1.98 mm) anodized aluminum
- Lockable storage capacity 20 ft³ (0.566 m³)
- Wind speed rating (structure) 175 mi/h (78 m/s)
IBC 2015 exposure C
- 120 mi/h (54 m/s) with signage
- Perimeter netting (optional) 4 in (101.6 mm) square mesh

Anchor System

- Concrete Surface
- Anchor type 5.5 in (140 mm) galvanized wedge
- Pull rating per anchor 2000 lb (907 kg)
- Asphalt Surface
- Anchor type 12 in (305 mm) grout embedded
- Pull rating per anchor 2999 lb (1360 kg)

Lighting

- Luminaires per pitch Qty 2 TLC-LED-550
See luminaire datasheet for details
- Aiming Factory aimed 0.2° accuracy
- Wind speed rating (aiming only) 150 mi/h (67 m/s)
- Pole and crossarm material Hot-dip galvanized steel
- Lifting eye Integral
- Pole support Anchored frame structure
- Wind speed rating (pole) 175 mi/h (78 m/s)
IBC 2015 exposure C



Datasheet: Mini-Pitch System™ Modular Sports Solution

Control-Link® Control System and Electrical Components Enclosure

- Factory wired, programmed, and tested
- Internally fused
- Control power terminal blocks provided

Control Module

Receives and stores schedules from Control-Link Central™ service center, operates your equipment, and verifies schedules are carried out.

- Executes scheduled on/off events
- Stores schedules for up to 7 days
- Automatic recovery mode to current lighting schedule in the event of power interruption or loss

Communication Modules

Communication with Control-Link Central via integrated, high speed, cellular connection with no additional monthly charges during the warranty period.

I/O Board and Contactor Modules

Switches equipment based on control module schedules.

- Compliant with IEC 60947-4-1 for continuous operation at 100% of rated current
- Contactors rated for 30 A

Circuit Protection

- 50 kA Surge protection
- Internally fused

Ground Bar

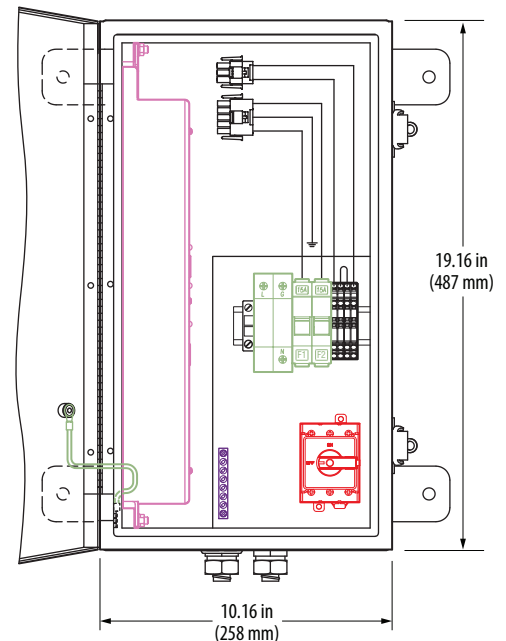
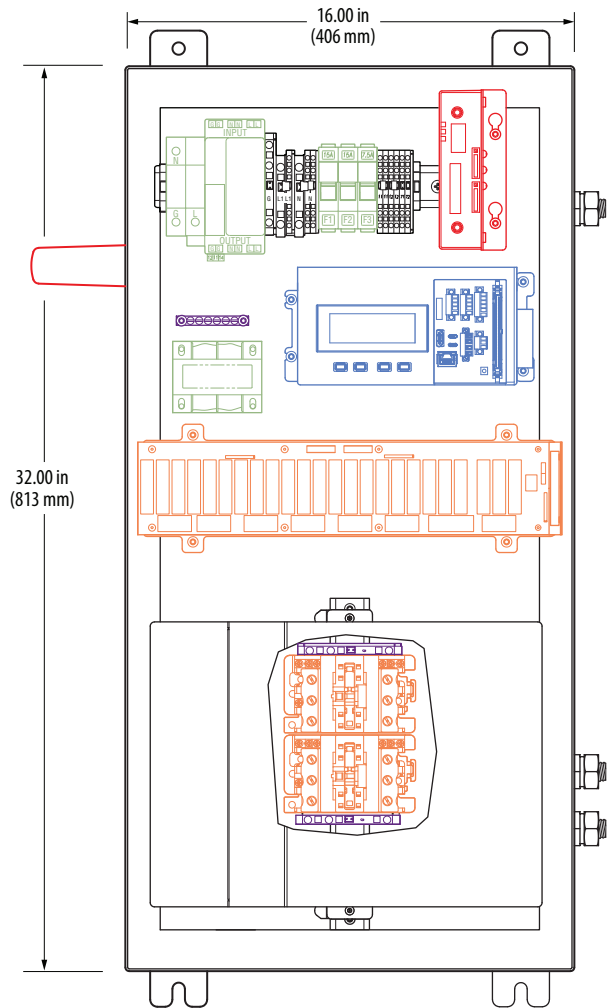
Provides integral ground bar for lighting equipment grounding.

Remote Driver

- Easy access for maintenance
- Isolated from luminaires for improved thermal performance

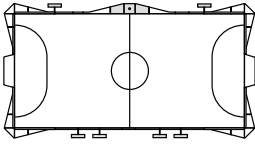
Disconnect Switch

- Disconnects power at electrical components enclosure
- Supports lock-out/tag-out procedures

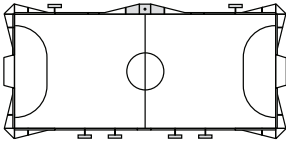


Datasheet: Mini-Pitch System™ Modular Sports Solution

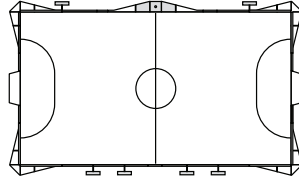
Pitch Configurations



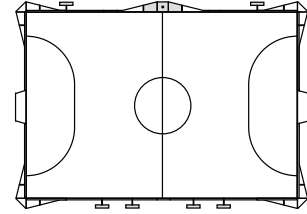
40 ft x 74 ft
12 m x 22 m



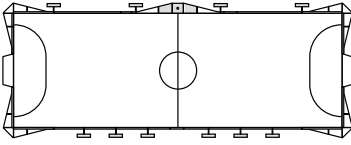
40 ft x 84 ft
12 m x 25 m



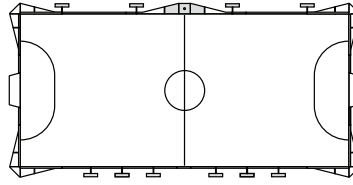
50 ft x 84 ft
15 m x 25 m



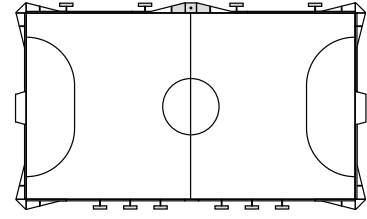
60 ft x 84 ft
18 m x 25 m



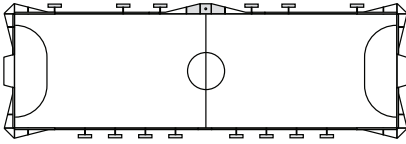
40 ft x 104 ft
12 m x 32 m



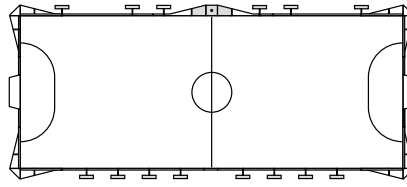
50 ft x 104 ft
15 m x 32 m



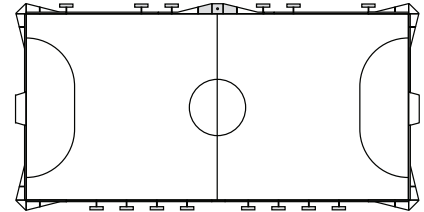
60 ft x 104 ft
18 m x 32 m



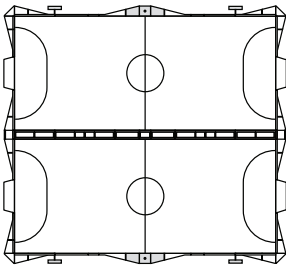
40 ft x 120 ft
12 m x 36 m



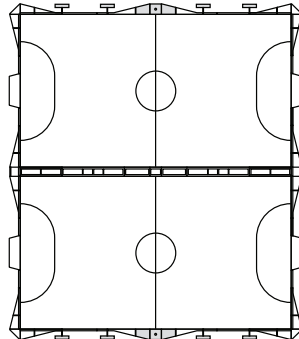
50 ft x 120 ft
15 m x 36 m



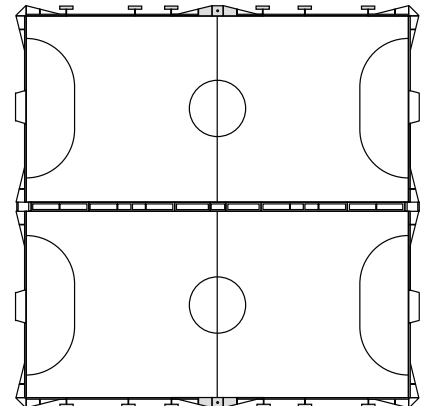
60 ft x 120 ft
18 m x 36 m



76 ft x 84 ft
23 m x 25 m



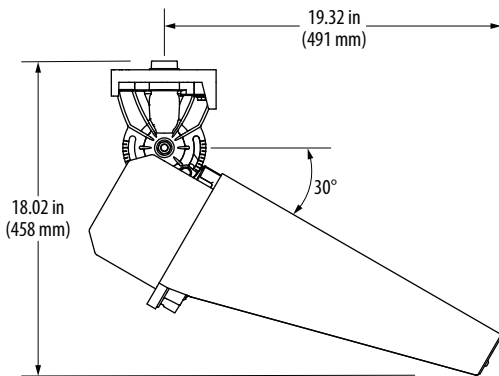
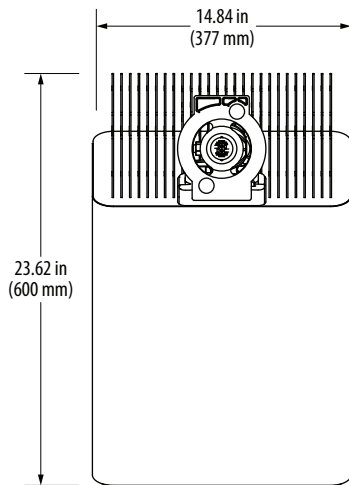
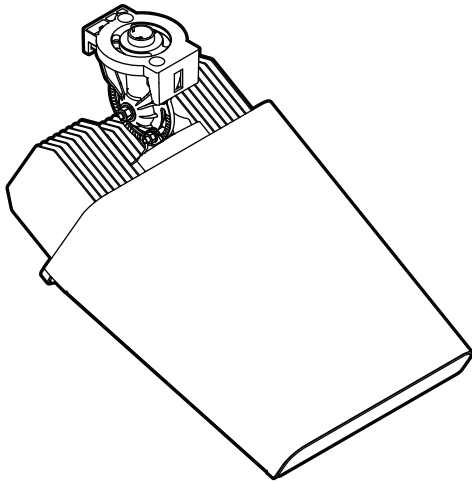
96 ft x 104 ft
29 m x 32 m



116 ft x 120 ft
35 m x 36 m

*Note: Double pitch available in all optional sizes.

Datasheet: TLC-LED-550 Luminaire and Driver



Luminaire Data

Weight (luminaire)	25 lb (11 kg)
UL listing number	E338094
UL listed for USA/Canada	UL1598 CSA-C22.2 No.250.0
CE Declaration	LVD, EMC, RoHS
Ingress protection (luminaire)	IP66
Impact rating	IK07
Material and finish	Aluminum, powder-coat painted
Wind speed rating (aiming only)	150 mi/h (67 m/s)
UL, IEC ambient temperature rating (luminaire)	50°C (122°F)

Photometric Characteristics

Projected lumen maintenance per IES TM-21-11	
L90 (20k)	>120,000 h
L80 (20k)	>120,000 h
L70 (20k)	>120,000 h
Lumens ¹	67,000
CIE correlated color temperature	5700 K
Color rendering index (CRI)	75 typ, 70 min
LED binning tolerance	5-step MacAdam Ellipse

Footnotes:

1) Value represents most common optical variation. Incorporates appropriate dirt depreciation factor for life of luminaire.

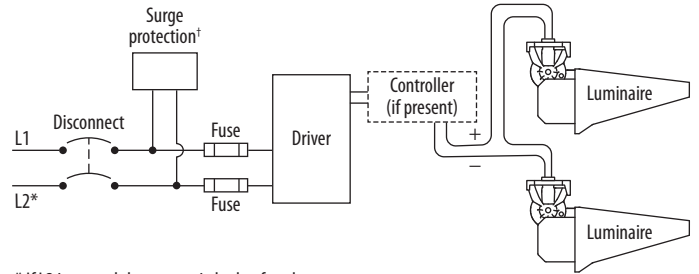
Datasheet: TLC-LED-550 Luminaire and Driver

Driver Data

Electrical Data

Rated wattage ¹	
Per driver	1080 W
Per luminaire	540 W
Number of luminaires per driver	1 - 2
Starting (inrush) current	<40 A, 256 µs
Fuse rating	15 A
UL, IEC ambient temperature rating (electrical components enclosure)	50°C (122°F)
Ingress protection (electrical components enclosure)	IP54
Efficiency	95%
Dimming mode	optional
Range, energy consumption	15 - 100%
Range, light output	20 - 100%
Flicker	<2%
Total harmonic distortion (THD) at full output	<20%

Typical Wiring



* If L2 is neutral then not switched or fused.
 † Not present if indoor installation.

	200 Vac 50/60 Hz	208 Vac 60 Hz	220 Vac 50/60 Hz	230 Vac 50 Hz	240 Vac 50/60 Hz	277 Vac 60 Hz	347 Vac 60 Hz	380 Vac 50/60 Hz	400 Vac 50 Hz	415 Vac 50 Hz	480 Vac 60 Hz
Max operating current per luminaire²	3.32 A	3.19 A	3.02 A	2.89 A	2.88 A	2.40 A	1.92 A	1.75 A	1.66 A	1.60 A	1.39 A

Footnotes:

- 1) Rated wattage is the power consumption, including driver efficiency losses, at stabilized operation in 25°C ambient temperature environment.
- 2) Operating current includes allowance for 0.90 minimum power factor, operating temperature, and LED light source manufacturing tolerances.

Notes

1. Use thermal magnetic HID-rated or D-curve circuit breakers.
2. See *Musco Control System Summary* for circuit information.

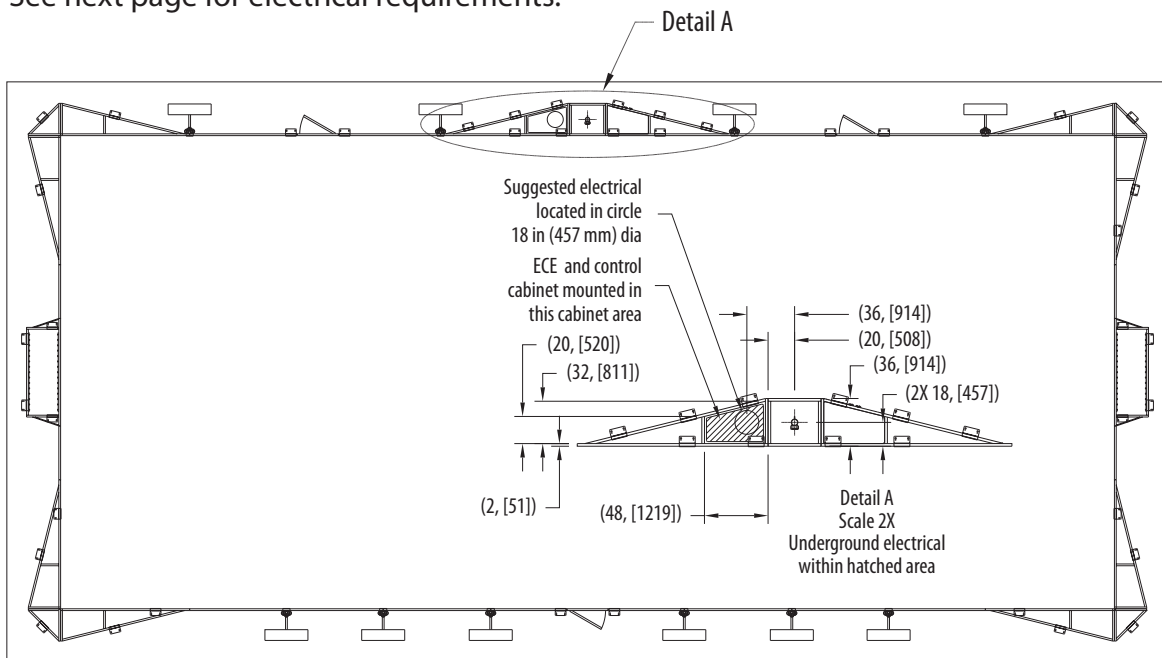


Musco Mini-Pitch System™ Modular Sports Solution

Minimum Site Requirements

In order to qualify as a potential Musco Mini-Pitch System building site, you must meet the following minimum requirements.

- Asphalt or concrete pad.
 - If it's a new pad or overlay, we recommend allowing for 4 weeks of cure time prior to structural installation.
- Pad must be a minimum 4 ft (1.22 m) longer and 3 ft (0.91 m) wider than what is needed for the Mini-Pitch System. For safety purposes, we recommend 10 ft (3.05 m) longer and 10 ft (3.05 m) wider.
- Pad must be consistent and uniform in grade.
- Pad must not have substantial defects (i.e. wide cracks, heaving, potholes, etc.), or other obstacles (i.e. drains, basketball poles, etc.) on playing surface.
- Pad has to be accessible by telehandler for installation.
- Access to electrical for lighting options.
 - See next page for electrical requirements.



All pitch dimensions are external dimensions unless otherwise stated.



Musco Mini-Pitch System™ Modular Sports Solution

Minimum Site Requirements

Electrical Requirements: Two circuits need to be brought to a single point on the mini-pitch (see diagram on the previous page); a 120v control circuit and a lighting circuit. The lighting circuit needs a minimum of 208v single phase, but other options are available.

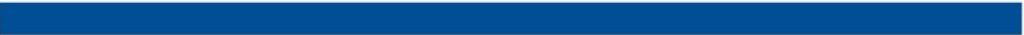
- 120v control circuit allows the lights to operate and be scheduled. The circuit draws less than an amp. A control transformer can be utilized in certain applications.
- The lighting circuit can be 208v, 240v, 277v, 347v or 480v. The draw on the lighting circuit depends on the voltage (see table below). A single mini-pitch has two lights while a double has four lights. The values in the tables are for a single luminaire. All lighting circuits are single-phase.
- A single mini-pitch has one connection point and can be on either sideline.
- A double mini-pitch has poles on both sidelines and will need a feed brought to one sideline. In addition, there must be a conduit between the two poles to feed the second pole—similar to a switch leg.

	200 Vac 50/60 Hz	208 Vac 60 Hz	220 Vac 50/60 Hz	230 Vac 50 Hz	240 Vac 50/60 Hz	277 Vac 60 Hz	347 Vac 60 Hz	380 Vac 50/60 Hz	400 Vac 50 Hz	415 Vac 50 Hz	480 Vac 60 Hz
Max operating current per luminaire	3.32 A	3.19 A	3.02 A	2.89 A	2.77 A	2.40 A	1.92 A	1.75 A	1.66 A	1.60 A	1.39 A





ITEM C





Musco 10 Year Warranty

10-Year Product Assurance & Warranty Program

Project name: _____ Project number: _____

Owner: _____

City: _____ State: _____

Covered product(s) Mini-Pitch System™ modular sports solution with TLC for LED® luminaires

Date issued: _____ Expiration: _____

Musco Sports Lighting, LLC will provide all materials and labor to maintain operation of your Mini-Pitch System™ modular sports solution to original design criteria for 10 years. Musco products and services are guaranteed to perform on your project as detailed in this document.

Structural Integrity

Your Mini-Pitch System modular sports solution has been designed to meet or exceed local building codes and resist corrosion. Structural integrity of the system including fence panels, goals, seating, and light poles is guaranteed for the warranty period.

Light Performance

Luminaire outages that occur during the warranty and maintenance period will be repaired or replaced.

Control Services

On-off control of your lighting system is provided via an easy-to-use web site scheduling system, smartphone app, phone, or email. Our trained Control-Link Central™ service center team is available 24/7/365. Regular usage reports are always available on Control-Link Central's web site.

Musco has a team to ensure fulfillment of our product and services warranty and maintains financial reserves dedicated to support our fulfillment of this warranty. Please keep this document as your signed contract guaranteeing comprehensive service for the 10 year period.



Musco 10 Year Warranty

10-Year Product Assurance & Warranty Program

Terms and Conditions

Musco Sports Lighting, LLC ("Musco") or an authorized servicer shall furnish labor and parts necessary to restore operation of Covered Product(s) to original design criteria provided the failure was a result of normal usage.

This Contract covers Mini-Pitch System™ modular sports solution with Control-Link®, TLC for LED®, and any additional Musco manufactured product as listed on page 1. "We", "us," and "our" mean Musco. "You" and "your" mean the purchaser of the Covered Product(s).

This Contract cannot be changed without the prior written approval of Musco. If there is a conflict between the terms of this Contract and information communicated either orally or in writing by one or more of our employees or agents, this Contract shall control.

Additional Provisions

1. Availability of Service:

- a. Control-Link Central™ operators are available 24/7 via web site, phone, fax, or email.
- b. Maintenance service specialists are currently available 8AM to 5PM Central Time Monday through Friday, except for national holidays. Services shall be rendered during these same hours in your local time zone.

2. Determination of Repairs: Musco will utilize any information provided by the facility owner to determine any needed repair and/or replacement of Covered Product(s) and parts. Repair will be with Product(s) of like kind and quality.

3. Your Requirements Under this Contract: You agree to meet and maintain all electrical requirements (if any) and install as specified by Musco or as approved in advance by Musco's Warranty Department.

4. Service Limitations: Musco will exercise all reasonable efforts to perform service under this Contract but will not be responsible for delays or failure in performing such services due to causes beyond its control.

This Contract does not cover maintenance, repair, or replacement due to damage from:

- a. External causes such as but not limited to misuse, vandalism, or unauthorized repairs or modifications. (Unauthorized repairs or modifications void this warranty in its entirety.)
- b. Failure of any non-Musco equipment or electrical systems.
- c. Acts of nature such as but not limited to weather events or lightning.

5. Contract Limitations:

a. **EXCLUSIONS FROM COVERAGE:** IN NO EVENT WILL MUSCO BE LIABLE FOR ANY SPECIAL, INDIRECT, INCIDENTAL, OR CONSEQUENTIAL DAMAGES WHICH INCLUDE, BUT ARE NOT LIMITED TO, ANY DELAY IN RENDERING SERVICE OR LOSS OF USE DURING THE REPAIR PERIOD OF THE COVERED PRODUCT(S) OR WHILE AWAITING PARTS.

b. **LIMITATION OF LIABILITY:** To the extent permitted by law, liability of Musco for any defective Covered Product(s) shall be limited to repair or replacement of the Covered Product(s). THIS CONTRACT IS YOUR SOLE EXPRESS WARRANTY. ALL IMPLIED WARRANTIES INCLUDING, BUT NOT LIMITED TO, IMPLIED WARRANTIES OF MERCHANTABILITY AND FITNESS FOR A PARTICULAR PURPOSE, ARE HEREBY EXPRESSLY EXCLUDED.

c. If applicable, the liability of the issuing surety of the surety bond is limited to the first 12 months of the warranty period.

d. Musco requires reasonable access for equipment to service the system. We will follow designated access routes but will not be responsible for damage on the property for operating equipment in the prescribed manner.

e. If we find that any parts of the Covered Products become obsolete, prohibited by law or regulation or are no longer available, Musco may replace them with comparable parts at our discretion. We will notify you of any replacement cost prior to starting the work.

6. Transfer and Assignment: Except to facility owners, you cannot assign your rights and obligations under this Contract without prior written consent of Musco. A successor of your entire business shall acquire your interests under this Contract.

7. Governing Law: Unless otherwise governed by applicable state law, the Contract shall be interpreted and enforced according to the laws of the State of Iowa.

8. Subrogation: In the event Musco repairs or replaces any Covered Product(s), parts or components due to any defect for which our vendors, agents or suppliers may be legally responsible, you agree to assign your rights of recovery to Musco. You will be reimbursed for any reasonable costs you may incur in connection with the assignment of your rights. You will be made whole before Musco retains any amounts it may recover.